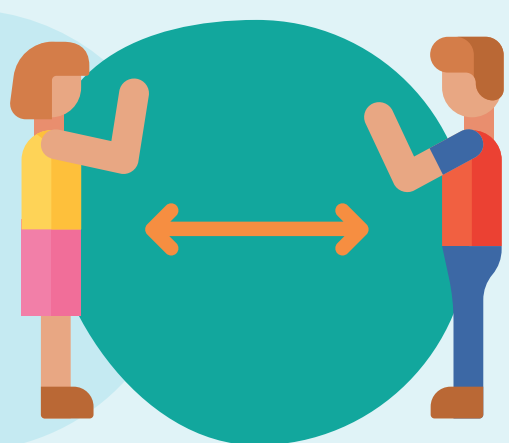


# COVID-19

## REDUCE THE RISK

### In our Libraries!

Please wear a face covering at all times when on campus to protect yourself and others



The library is set up for single-person study only

Students will be allocated a workspace on arrival



Spaces are bookable but priority will be given to students who cannot work at home

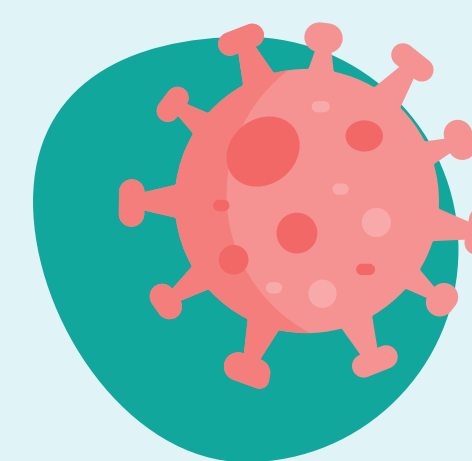
Tables and chairs must not be moved

Computer and desk spaces are limited



We cannot facilitate groups

Anti-bac wipes will be provided  
& you must clean your work area before use



Browsing books is allowed but will be limited to four people at one time

All returned resources will be quarantined for 72 hours before being shelved



Classroom packs of books can be provided with three days' notice



The library will no longer be able to lend pens and other equipment

#### Don't forget!

Please wash your hands with soap & water thoroughly & regularly throughout the day.

Thank you for doing your part to keep everyone safe!

[www.escg.ac.uk](http://www.escg.ac.uk)

