

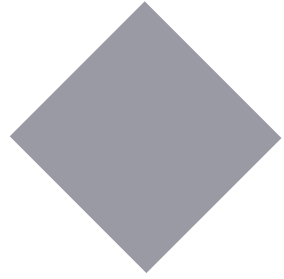
# International course guide

All you want from a top ranked  
language school... plus much more!





# Contents



## GENERAL INFORMATION

All you want from a top ranked English language school	2
One college, four campuses	4
Successful Students	6
UK Education system	8
English Language Programmes	8
Pre-university academic study	9
Higher Education	9
Accommodation	24
College Activities	25
Applying	26
Meet the team	27
Quality Care Success	28

## OUR PROGRAMMES

### *English Language Programmes*

Year Round 21 Hour English Language Plus	12
Year Round 15 Hour English Language Plus	13
1-1 Gold Standard English Language	14
Summer Groups – 16 Yrs+	16

### *Academic/Vocational Courses*

International Study Year (High School Programme)	15
A Levels	17
Vocational, Technical & Professional Courses	18
University of Arts London Foundation Diploma in Art And Design	20
University Level Courses	22



# All you want from a top ranked English language school

plus much more!



Year round  
**15 & 21  
hour**

a week English Language  
Plus course options.



Dedicated international team with a full-time Immigration Compliance Officer to advise on all aspects of visas.

Residential on-campus accommodation and homestay options.

Fast-growing High School Programme at all three campuses with wide range of subjects.



Degree level programmes with an exciting new partnership with University of East Anglia.

20

different nationalities.

Fun social programme with wide range of college clubs and activities e.g. sport, music, photography, art and trips.

4

modern campuses to choose from in beautiful and safe locations on the South coast of England.

An all year round language school at Lewes with no half terms.

13  
out of  
15

areas of strength in 2023 British Council Inspection Report for Lewes putting us in the top 5% of all UK language schools.\*  
\* As stated in September 2023 edition of English Language Gazette.



# One college, four campuses

## The campuses

- Wide range of academic and vocational courses.
- Well-established English language centre at Lewes, offering year-round English language tuition.
- World class building at Hastings with vibrant High School Programme.
- Fast-growing High School Programme at Eastbourne with excellent sports centre next door.
- Marine Biology in the port town of Newhaven.
- Degree level programmes at all three main campuses with small class sizes.



### Eastbourne fact file

- World-famous holiday town.
- Eight kilometres of unspoilt beaches.
- Lively social scene.
- Large shopping centre.
- Many national awards such as "Best UK Resort", "Tourism Destination of the Year", and "Most Welcoming Town in Britain".



### Lewes fact file

- Historic town offering a peaceful and typically English experience.
- Wonderful 1000 year-old castle and rich in culture.
- Many independent shops, cosy restaurants and cafes.
- Safe and welcoming for our international students.
- The university city of Brighton & Hove just 13 minutes by train from Lewes.

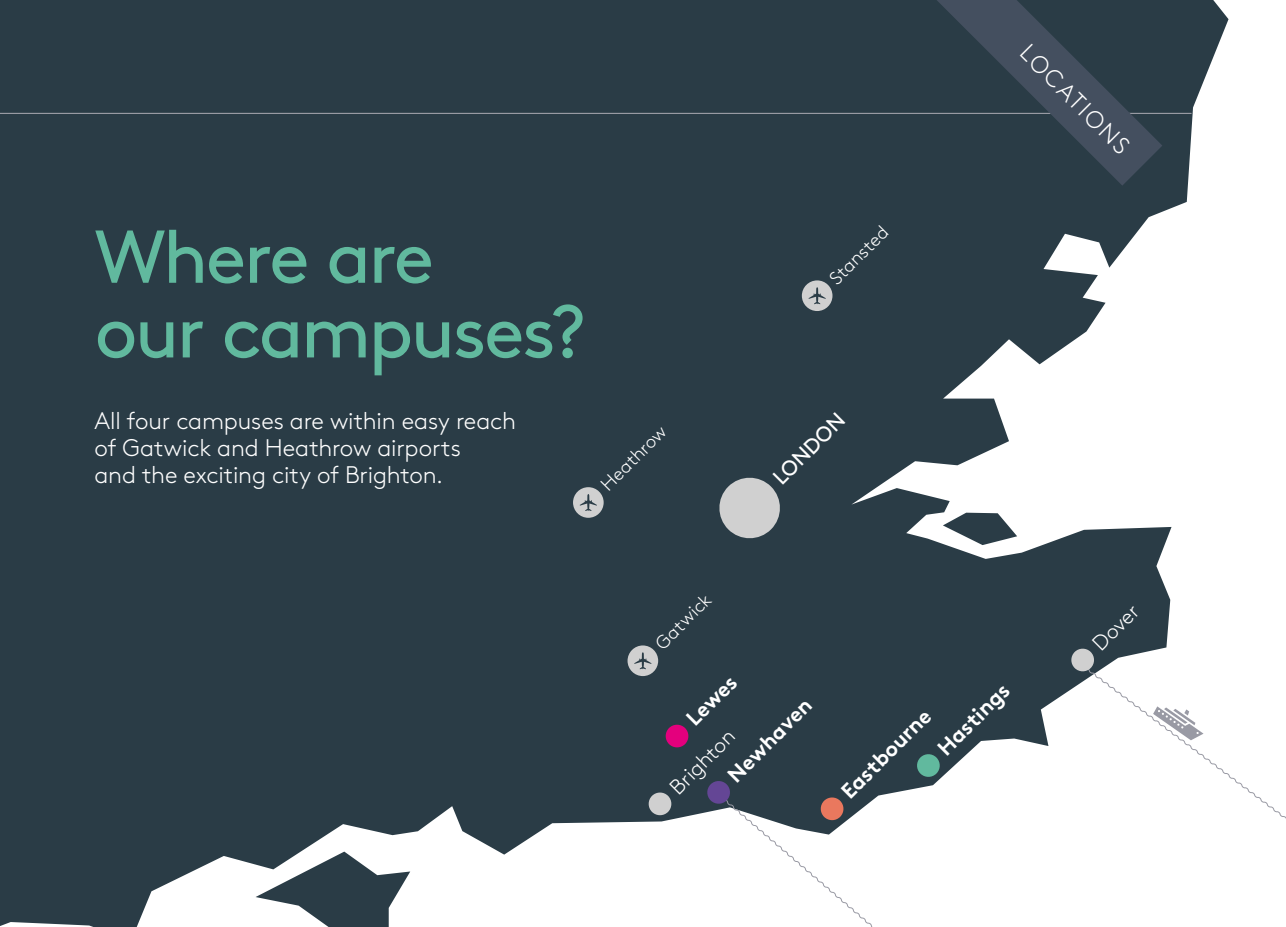


### Newhaven fact file

- Ferry port and gateway to Europe.
- Interesting nautical and industrial history.
- Close to Seaford Head and Seven Sisters National Park.

# Where are our campuses?

All four campuses are within easy reach of Gatwick and Heathrow airports and the exciting city of Brighton.



	Eastbourne	Lewes	Hastings	Newhaven
London	1 hour 15 mins	1 hour	1 hour 45 mins	1 hour 35 mins
Brighton	35 mins	13 mins	1 hour 10 mins	30 mins
Gatwick	1 hour	40 mins	1 hour 30 mins	1 hour
Heathrow	1 hour 40 mins	1 hour 20 mins	2 hours 45 mins	2 hours 35 mins

## Hastings fact file

- Historical seaside town famous for the Battle of Hastings in 1066.
- Interesting Old Town with characterful shops and cafes.
- Known for its caves and castle.
- UK's largest cliff railway.
- Large beach home to Europe's largest beach-launched fishing fleet.



# Successful Students

We take great pride in our students' examination results, which are consistently above the national average.

University destinations for our international students have included:

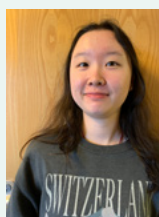
## UK

- Cambridge
- London School of Economics
- Imperial College
- University College London
- Warwick
- Durham
- Bath
- Exeter
- Bristol
- Queen Mary
- King's College London
- Surrey
- Kent
- University of Arts London
- Royal Academy of Music
- Royal College of Music

## Overseas

- The University of Hong Kong
- The Hong Kong Polytechnic University
- University of Toronto
- University of Melbourne
- The Chinese University of Hong Kong
- The Hong Kong University of Science and Technology
- Flinders University of Tokyo
- Osaka University
- Kyoto University

## Our students



**JIN Tian (Trista) (China)**  
2nd Year A Level –  
Maths, Further Maths,  
Economics, Physics

*I am currently studying Y2 of A level Maths, Further Maths, Physics, and Economics. I like all my classes and the*

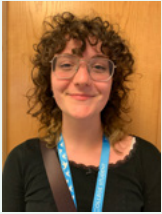
*college environment! The Physics lab has lots of equipment, and the resources are excellent. We usually discuss things and solve problems with our classmates, with our teachers' help. I really like this style of learning as it helps me to develop a deep understanding of each topic. In Economics we learn a lot about the latest policies being implemented by governments across the world, which is really helpful.*

*I am a college student governor as well as a student representative, so I meet with the College Principal regularly and the College Principal and senior management team really respect our opinions and feedback.*

*My host is really kind and her family always talk with me when they are free. My host really cares about me.*

*I always feel safe here. My parents are very happy that I'm living in such a safe place. The people who live in Lewes are really kind and friendly. It has nice cafes and restaurants, and there are 3 good supermarkets.*

*It has been a really lovely experience studying at the college and I'm looking forward to progressing to LSE or Warwick to study on a maths-related degree.*



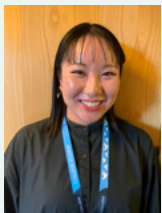
**Alessia Luise (Italy)-  
International Study Year  
(Criminology, Psychology, Law)**

*At first, I came here with the purpose of improving my English. However, I have been able to learn so much more than I expected.*

*The classes are fun, interactive, interesting and also excel in giving students the education they need.*

*Not only I have improved my understanding of the language, but in fact I have been able to discover many things about myself. I have taken classes in psychology, criminology and law for the first time. This has helped me find a path that I'd like to pursue in the future.*

*In five months, my friends, family and I, myself, have acknowledged the maturity that I have acquired thanks to this experience and to the environment that has allowed me to grow as a person.*

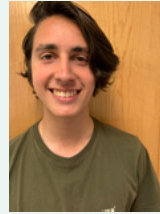


**Ayane Miyazaki (Japan)  
English Language  
Plus (21 hours)**

*I'm studying English on the 21-hour English language course for half a year. I really enjoy everyday classes with my classmates from many different*

*countries. I especially like the discussion time we are given, and listening to various points of view. Teachers teach us not only academic English but also real-life English in high quality lessons. As a result of that, I don't hesitate to talk to many people in English anymore.*

*Lewes is a very peaceful town with beautiful nature around it. I believe that my English skills, especially my speaking skills, have improved significantly since I came here.*



**Pedro Donoso Ugalde  
(Ecuador)- International  
Study Year (Music, Music  
Tech, Business)**

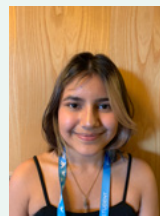
*When I arrived here, the only thing on my mind was the thought of improving my knowledge of music, and to find*

*out what career I want to pursue. It's only been four months and everything has changed. I have made a lot of unexpected friendships from all around the world, plus I finally know what career I want to pursue.*

*Thanks to the open facilities at the college, I have managed to work for what seems like countless hours with the computer programs and constantly practise with the beautiful pianos which the college offers.*

*Somehow I used to believe that there was no way to improve my English, but I was proved wrong. The English classes are a wonderful, interactive and awesome place to make new friends while learning.*

*This has definitely been an experience I won't regret.*



**Maria José Forero Sanchez  
(Columbia) English  
Language Plus (15 hours)**

*I am studying on the fifteen-hour English Language Plus course. During my time here, I've had the pleasure of meeting wonderful people*

*from diverse backgrounds, allowing me to learn about their cultures firsthand.*

*Each passing day, I thoroughly enjoy the dynamics in the English classes, which have further fuelled my enthusiasm to continue learning my second language. Engaging with new friends and experiencing different teaching styles has enriched my overall educational experience abroad.*

# UK Education System



## English Language Programmes

- 21 Hour English Language Plus.
- 15 Hour English Language Plus.
  - 1-1 Gold Standard English.
- Summer Groups – 16 years+.

## Pre-university academic study

### Level 3

- International Study Year (High School Programme).
  - A Levels.
- Vocational, Professional and Technical Courses.
- Art and Design Foundation Diploma (University of Arts London).





**Higher Education**

**Level 5**

University Foundation Degree and Higher National Diplomas.

**Level 6**

Bachelor Degrees and Top Up Degrees.





# COURSES

## YEAR ROUND 21 HOUR ENGLISH LANGUAGE PLUS

- Improve your general English.
- Study a range of options relevant to your interests or personal goals.
- Flexible start dates and course lengths depending on your study objectives.
- A weekly tutorial to check your progress and keep you informed about what's on in the college.
- In addition to studying on the 21 Hour English Language Plus course, you could choose from a huge range of adult part time classes ranging from management to art and crafts. These can be booked only after your arrival at the college.

### Course start

Most Mondays throughout the year (see fee sheets for holiday dates).

### Course length

2 weeks minimum.

### Average class size

14 (maximum 20).

### Hours per week

21

### Min. age

16 years old.

### Entry requirement

- English language level at Pre-intermediate/CEFR A2 or above.

### Campus

Lewes

### General English

15 hours.

Course includes: grammar and vocabulary, speaking, listening, reading and writing and tutorial.

### Options (three hours)

- Academic English with IELTS.
- Additional English.
- Art and Design (students can infill into classes with British students on demand).
- Business.
- English through Film.
- Sports Academies.
- Travel and Tourism.

### Exam Preparation

#### One choice per term (three hours)

- CAE (Advanced).
- FCE (First Certificate).
- IELTS.
- PET (Preliminary).

### Total programme

21 hours.

Please note that during July and August, the 21 hour course changes in the following way:

- No tutorials
- Art and Design class not available

Please note that although students aged 16-18 are classified as adults in respect of their eligibility for this course, they are subject to stricter rules on supervision, details of which can be found on Page 22 (accommodation) of the brochure.

## YEAR ROUND 15 HOUR ENGLISH LANGUAGE PLUS

- Suitable for those on a smaller budget and allows students free time to pursue other activities.
- The 15 hours General English includes grammar and vocabulary, speaking, listening, reading and writing, plus a weekly tutorial to check your progress and let you know what's happening in the college and local area.

### Course start dates

Most Mondays throughout the year (see fee sheets for holiday dates).

### Course length

2 weeks minimum.

### Average class size

14 (maximum 20).

### Hours per week

15

### Min. age

16 years old.

### Entry requirement

- English language level at Pre-intermediate/CEFR A2 or above.

### Campus

Lewes



Please note that although students aged 16-18 are classified as adults in respect of their eligibility for this course, they are subject to stricter rules on supervision, details of which can be found at Page 22 (accommodation) of the brochure.

## 1-1 GOLD STANDARD ENGLISH LANGUAGE

The Gold Standard class provides an expert teacher on a one-to-one basis with the course content developed specifically to meet your individual needs. You can choose from General English, Executive English or exam preparation in IELTS, PET, FCE, CAE or BEC.

The class is suitable for part-time or full-time students and can be arranged to fit around teaching or work schedules.

1:1 lessons can also be a very useful additional support to help you on our English Language Plus and International Study Year programmes should you require them.

The number of sessions available is flexible to meet your needs and can be combined with standard group classes.



## INTERNATIONAL STUDY YEAR (HIGH SCHOOL PROGRAMME)

- Achieve a higher level of fluency in English language whilst experiencing UK lifestyle and its education system.
- Study alongside British students without the pressure of sitting exams.
- Ideal for students taking a “gap year” before university studies.
- English language support and services of personal tutor built into the course.
- Flexibility of studying for just four weeks or up to a whole academic year.

Students will be able to choose up to three academic subjects or one technical or professional subject from the following options:

- Art and Design
- Biology
- Business Studies
- Chemistry
- Computer Science
- Dance
- Drama and Theatre Studies
- Economics
- Environmental Science
- Film Studies
- Fine Art
- French
- Further Maths
- Philosophy
- Geography
- Graphic Design
- History
- Maths
- Media
- Music
- Philosophy
- Photography
- Physical Education and Sports Studies
- Physics
- Politics
- Psychology
- Sociology
- Spanish

### Course Start

For up-to-date details, please see our fee sheets at <https://international.escg.ac.uk/apply/fees/>

### Course time

4 weeks up to whole academic year.

### Min. age

16 years old.

### Entry requirements

- Minimum English language level B2.
- Minimum five passes at GCSE level or equivalent.

### Campus

All

Please note that although students aged 16-18 are classified as adults in respect of their eligibility for this course, they are subject to stricter rules on supervision, details of which can be found at Page 22 (accommodation) of the brochure.

## SUMMER GROUPS – 16 YRS+

- More than 25 years of experience in welcoming groups of international students.
- Students follow our 21 Hour English Language Plus programme (<https://international.escg.ac.uk/international-courses/year-round-21-hour-english-plus>) and mix with students from other nationalities on both the course and the social programme.
- All adult groups (over 16 years of age) are now based at our Lewes campus and take place in July and August only.
- Please email [international@escg.ac.uk](mailto:international@escg.ac.uk) for a quote.



## A LEVELS

- Your passport to the best universities in the UK and typically studied in three subjects.
- Benefit from ongoing English language and subject-specific language support to help you achieve the best grades possible.
- Option to take our Enhanced Support Package which includes additional language and study skills lessons.
- Pre-arrival advice to ensure that your subject choices are right for you.
- On-course support from a dedicated Personal Tutor, individual progression advice and help with your university application.

Students normally take three of the following subjects:

- Art and Design
- Biology
- Business Studies
- Chemistry
- Classical Civilisation
- Computer Science
- Drama and Theatre Studies
- Economics
- Environmental Science
- Fashion & Textiles
- Film Studies
- Fine Art
- French
- Further Maths
- Geography
- Graphic Design
- History
- Law
- Maths
- Media
- Music
- Philosophy
- Photography
- Physical Education
- Physics
- Politics
- Psychology
- Sociology
- Spanish

Subjects correct at time of printing



## VOCATIONAL, TECHNICAL & PROFESSIONAL COURSES

### Obtain the skills and knowledge needed to enter the workplace or university

- Benefit from quality tuition from highly qualified teachers who have considerable industry experience.
- Develop your skills in realistic working environments relevant to your course, including East Sussex College's own restaurant, beauty salons and workshops, all of which are equipped to industry standards.

Please find below the list of subjects you can study:

- Applied Science
- Art and Design
- Business & Accounting
- Construction and the Built Environment
- Creative Media (Film and TV Production)
- Engineering
- Esports
- Game Design
- Hair & Beauty
- Complementary Therapy
- Make-Up Artistry
- Health and Social Care
- Hospitality & Catering
- Information Technology
- Marine Biology
- Media, Broadcast & Production
- Motor Vehicle Repair
- Music Performance & Production
- Performing Arts (Dance, Acting or Musical Theatre)
- Sport
- Travel and Tourism

### Course start

Please see <https://international.escg.ac.uk/international-courses/voc-tech-prof> for up to date details.

### Course length

1-2 years.

### Min. age

16 years old.

### Entry requirements

- Minimum English language level equivalent to IELTS 5.5 (academic) with a minimum of 5.0 in all four papers.
- Successful completion of two years of senior secondary school or equivalent.

### Campus

All three campuses.



## UNIVERSITY OF ARTS LONDON FOUNDATION DIPLOMA IN ART AND DESIGN

An intensive, practical and exciting one-year course, designed to prepare you for an art or design-based university programme.

- All tutors are practicing artists, designers and craftsmen and women who will support you throughout your course and encourage you to develop your creative and analytical skills.
- Covers all areas of art and design, including fine art, graphics & illustration, fashion and textiles, 3D, product and interior design or photography.
- High success rates in gaining places at top UK universities and art colleges such as Central St Martins, Edinburgh University, Goldsmiths College, London College of Communication, London College of Fashion, Ravensbourne, University of Brighton, University College London (UCL) and the Winchester School of Art.

### Course Start

For up to date information please see <https://international.escg.ac.uk/international-courses/ual-foundation>

### Course length

1 year.

### Min. age

18 years old by December in year of entry.

### Entry requirements

- Minimum English language level equivalent to IELTS 5.5 (Academic) with a minimum of 5.0 in all four papers.
- Senior secondary school certificate above GCSE level.
- Satisfactory portfolio of art, design and craftwork.

### Campus

Eastbourne or Hastings.



## Why take your degree at East Sussex College?

- Great facilities and small class sizes – 10 to 15 students per class with lots of teacher contact.
- New student residence only 2 minutes from campus.
- Relaxed and friendly atmosphere.
- Outstanding Student Satisfaction rating of 90.% compared to 79.9 nationally as confirmed by NSS (National Student Survey).
- Quality partnerships, working with University of East Anglia, University of Brighton and Pearsons.

We offer Foundation Degrees, Top Up Degrees and Full Honours Degrees accredited by the University of East Anglia (UEA), University of Brighton and Higher National Diplomas awarded by Pearson.

Please find below the courses available:

- Accounting
- Animation
- Business
- Computing
- Design
- Designer Maker (Craft)
- Digital Media Production
- Early Years Care & Education
- Engineering
- Fine Art
- Games Development
- Graphic Design & Illustration
- Health & Social Care
- Mechanical & Manufacturing
- Music Production & Creative Recording
- Photography and the Moving Image
- Teaching (PGCE)

Subjects correct at time of printing.

A **Foundation Degree** is equivalent to two years of a traditional honours degree. It is a qualification in itself and many students gain employment or decide to study for one more year by doing a “Top-Up” honours course.

An **HND** is a work-related course and is the equivalent of two years at university. Like a Foundation Degree you can study one more year and achieve a Bachelors Degree at a university.

### Course Start

See our website for the latest start dates.

### Course length

2 years (3 years if honours degree).

### Min. age

18 years old.

### Entry requirement

English language level equivalent to IELTS 6.0 (academic) with 6.0 in writing.

Successful completion of senior secondary school, A Levels or a Foundation course or equivalent.

### Campus

All three campuses.



# Accommodation

Accommodation provided by the college is thoroughly checked and monitored by our Accommodation and Welfare staff in accordance with the standards set out in the British Council Accreditation Scheme.

We offer homestay accommodation for students studying on our Hastings, Lewes, Eastbourne and Newhaven campuses. We also have an on campus self-catering residence for students over 18 on our Lewes campus.



# College activities

Participate in a wide range of activities that will support your learning, enabling you to learn new skills and make new friends.

Please see links below for further details.



# Applying to East Sussex College

You should submit the following documents to us for consideration:

- Application - a fully completed online international application form.
- Passport - a scanned copy.
- Academic Reports - your most recent school reports.
- English language certificates.

**For full details on the application procedure, please click on the "How to Apply" tabs at:**

<https://international.escg.ac.uk/apply/how-to-apply>

**For full details on our fees, please click on the link below:**

<https://international.escg.ac.uk/apply/fees>

# Meet the team



**Mark Allen**  
Assistant Principal  
International



**Emma Williams**  
International Officer  
(Eastbourne)



**Caron Lewis**  
Accommodation, Admissions &  
Compliance Manager



**Joanna Bourne**  
Senior Personal  
Tutor



**Karolina Bateman**  
Accommodation &  
Welfare Officer  
(Hastings)



**Katie Wingfield**  
Senior International Officer  
(Hastings)



**Graham Perry**  
International  
Programme Leader  
(English Language  
Lewes)



**Isabelle Smith**  
Accommodation &  
Welfare Officer  
(Lewes)





#### Telephone

- +44 (0) 30 300 39916 (Lewes)
- + 44 (0) 7584 684349 (Hastings)
- + 44 (0) 7823 668734 (Eastbourne)

#### Email

[international@escg.ac.uk](mailto:international@escg.ac.uk)

#### Website

[international.escg.ac.uk](http://international.escg.ac.uk)



### **Eastbourne Campus**

Cross Levels Way  
Eastbourne  
East Sussex BN21 2UF  
United Kingdom

### **Hastings Campus**

Station Approach  
Hastings  
East Sussex TN34 1BA  
United Kingdom

### **Lewes Campus**

Mountfield Road  
Lewes  
East Sussex BN7 2XH  
United Kingdom

### **Newhaven Campus**

Marine Workshops  
Railway Quay  
Newhaven  
East Sussex BN9 0ER  
United Kingdom